



# Shailja Apartment

3BHK LUXURIOUS APARTMENTS

# A life for a SELECT FEW

Introducing luxury Private Residences, where you experience a whole new idea of space and privacy.

It's built for those who have an affinity for quality and an uncompromising attitude towards all things fine.







# Enter with GRANDEUR

Welcome to Shailja Apartment, where we've laid the keystone of a luxurious lifestyle. Shailja Apartment are breathtakingly beautiful, blending space and efficiency to create the quintessential residential project for a thriving affluent community.





Shailja  
Apartment



# No cutting corners on LUXURY

Your life at shailja apartment is backed by the finest amenities available. Enjoy ample parking space for car parking, uninterrupted electricity and the security of round the clock surveillance. A futuristic and seamless lifestyle awaits you.



CCTV



Car charging point



Elevator



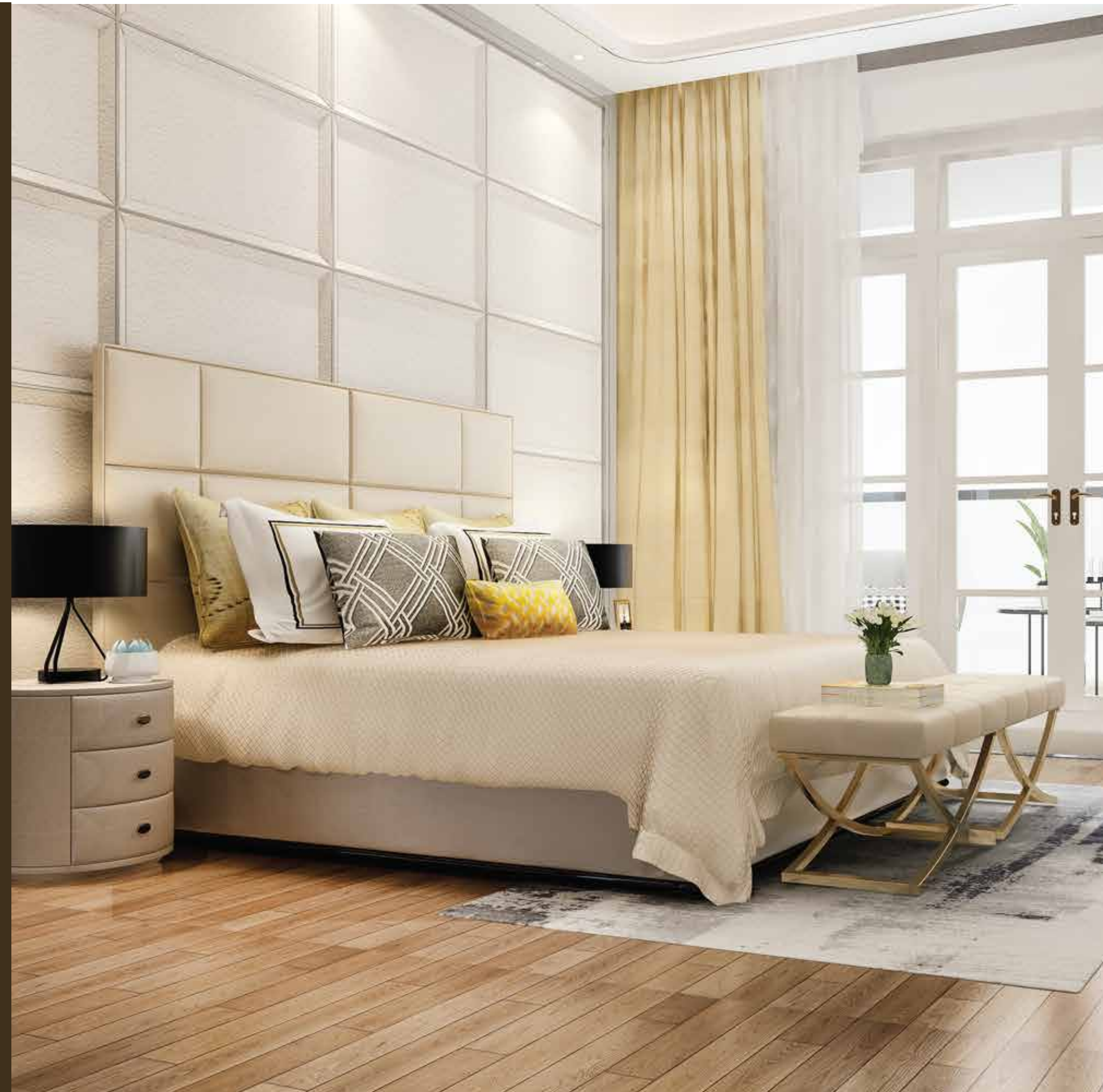
Kid's play area



Car Parking



Senior citizen zone





# SPECIFICATIONS

Decorative Entrance lobby  
High-speed elevator of reputed make.  
Earthquake resistant RCC structure  
Breathtaking beautiful elevation  
Modern fire Safety system  
Gated security entry  
Premium quality paints on the external wall  
Personal Car Charging points  
Beautiful Plantation  
Vitrified Flooring  
Brick Masonry  
24x7 Water Supply  
Premium bathroom fittings  
Rain water harvesting  
Solar powered lights for the common area  
Attractive entry gate















# Luxury of ACCESSIBILITY

An equilibrium of Buzz & Calm, Shailja flaunts an enriched neighbourhood where comfort and convenience can be found at every corner. So you can enjoy peace of mind without losing connect with city.

Gayatri Hospital & Research Center

Spandan Emergency and Care Critical Hospital

Vrundavan Joggers Park

Vijay Nagar Primary Higher & Secondary School

Jain Derasar

Dharti Vikas Mandal

Gym & Fitness Center

Indian Oil Petrol Pump







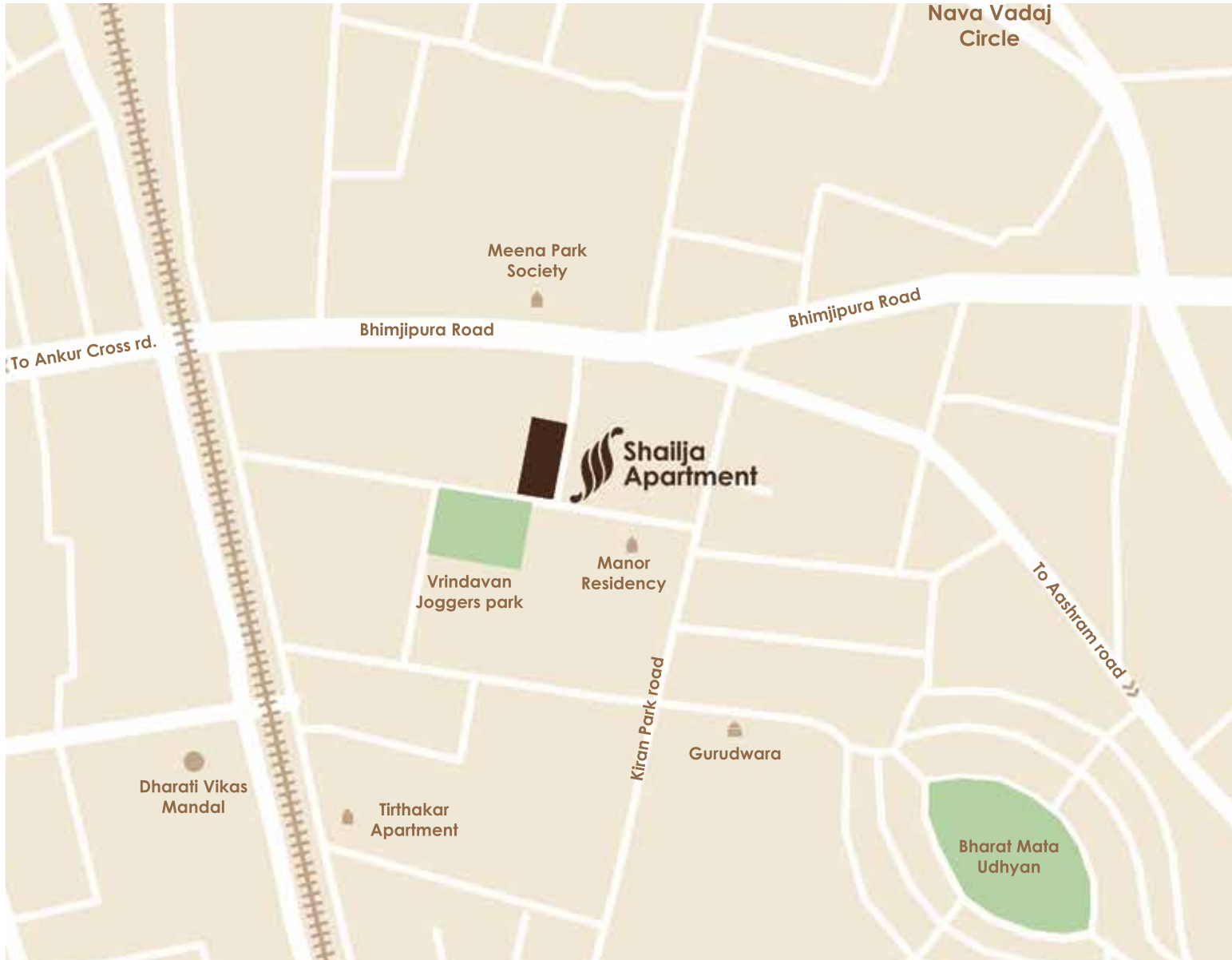
# The High Life *AWAITS* you

Introducing you to a life you've aspired for,  
and world-class designs you've always yearned  
for, You've lived your version of a lavish life; now  
experience the real deal.









**Shailja appartment-** Near Vrudavan jogger's park, Kiran Park, New Vadaj, Ahmedabad-13

☎ **9723021922 | 9712392929**

Developer



Architect



Structural Designer



Branding by



**RERA REGISTRATION NUMBER:** PR/GJ/AHMEDABAD/AHMEDABAD CITY/AUDA/RAA12868/070224/311226 | [WWW.GUJRERA.GUJARAT.GOV.IN](http://WWW.GUJRERA.GUJARAT.GOV.IN)